

Chester Walk Car Park

21/02567/CONDIT

Variation of condition 2 (approved plans) on planning permission ref. 20/00552/FUL, under Section 73 of the Town and Country Planning Act 1990, to update the block plan and ground floor plan to accommodate a new substation in the western corner of the site; and to allow for a number of internal and external alterations to the building, including additional/altered windows and doors

The site



Application No. 21/02567/CONDIT

Photos of building under construction



View from Chester Walk

View from car park to north



Photos of building under construction

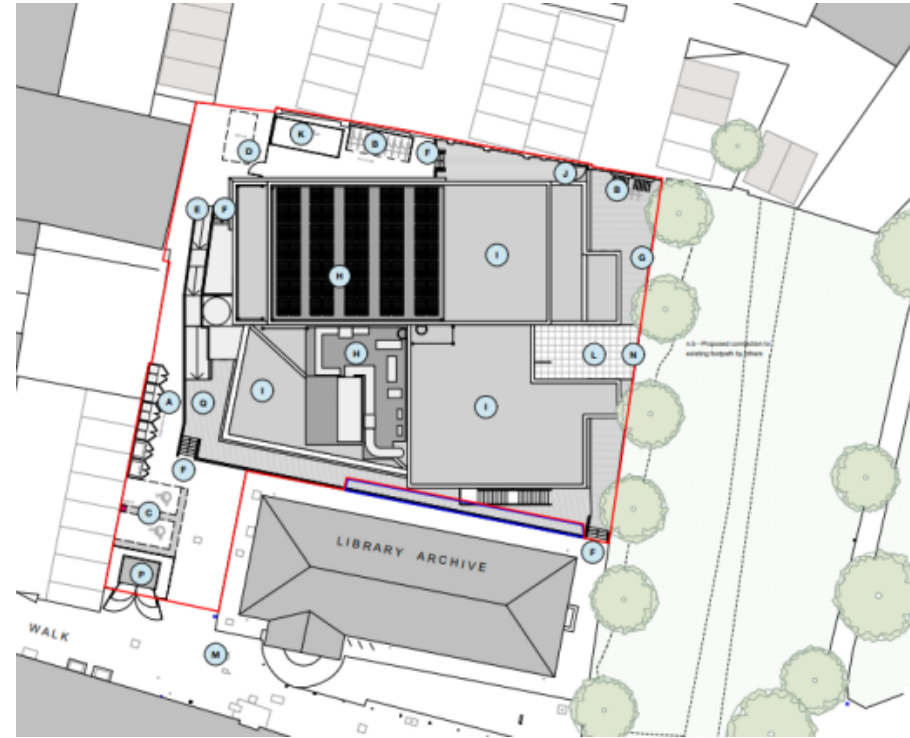
Views from Minster grounds



Block plan



As approved



As proposed

Ground floor plan

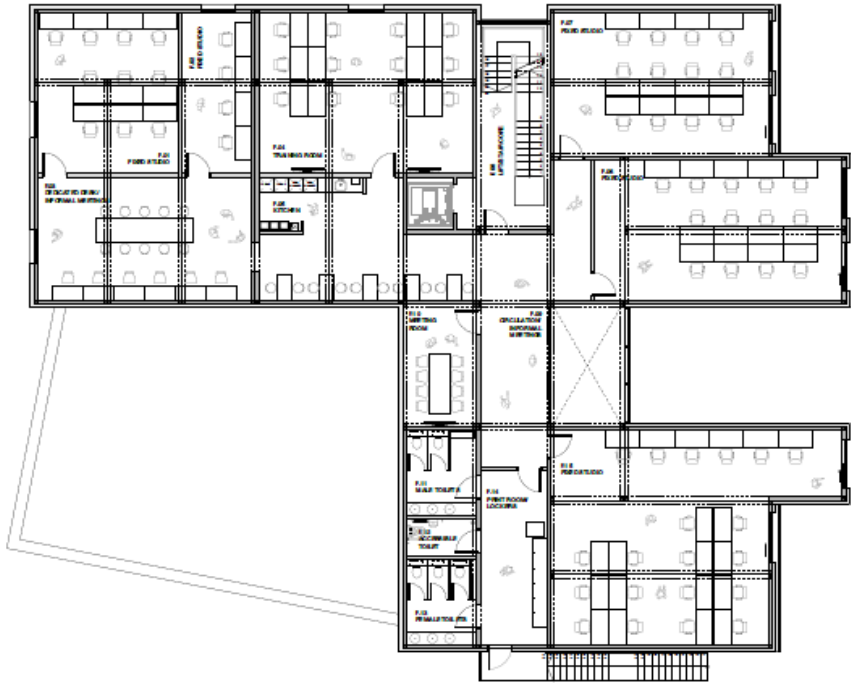


As approved

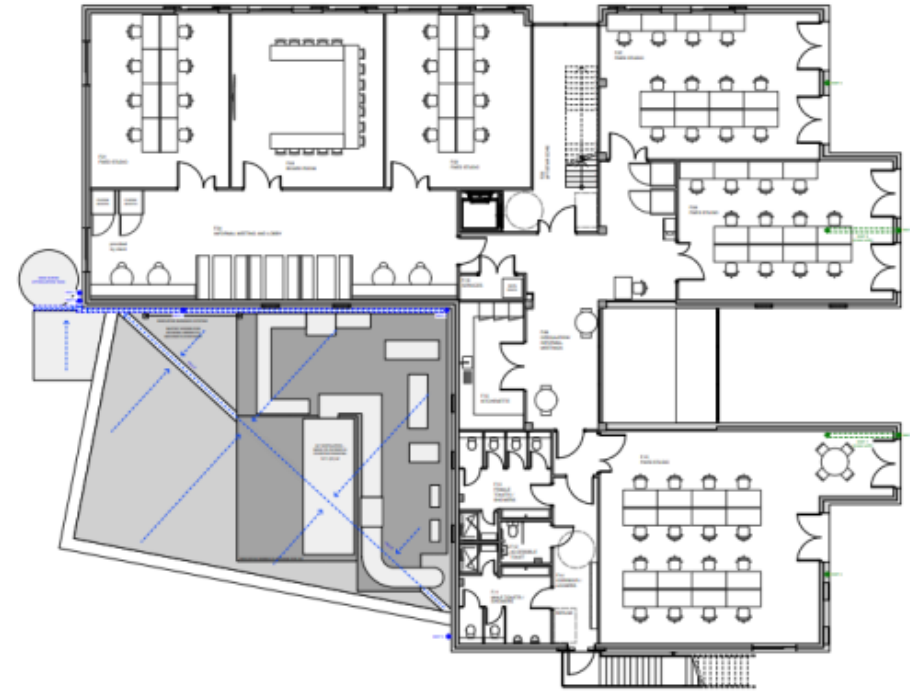


As proposed

First floor plan

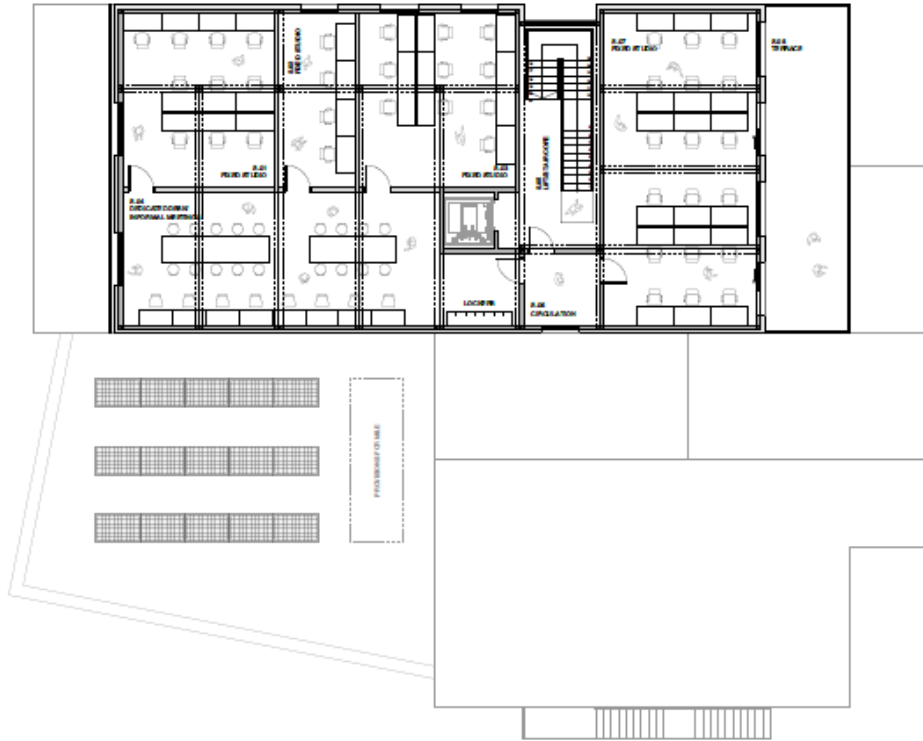


As approved

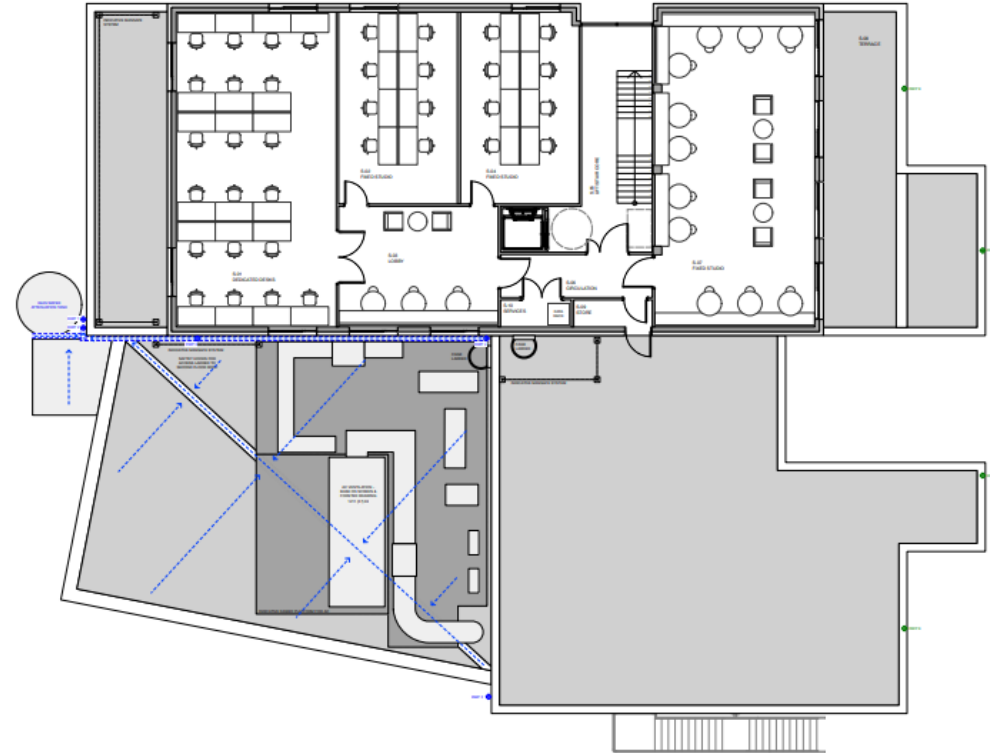


As proposed

Second floor plan



As approved



As proposed

Proposed Artists Impression - East elevation facing the Minster



As approved



As proposed

Proposed Artists Impression - View from Chester Walk



As approved

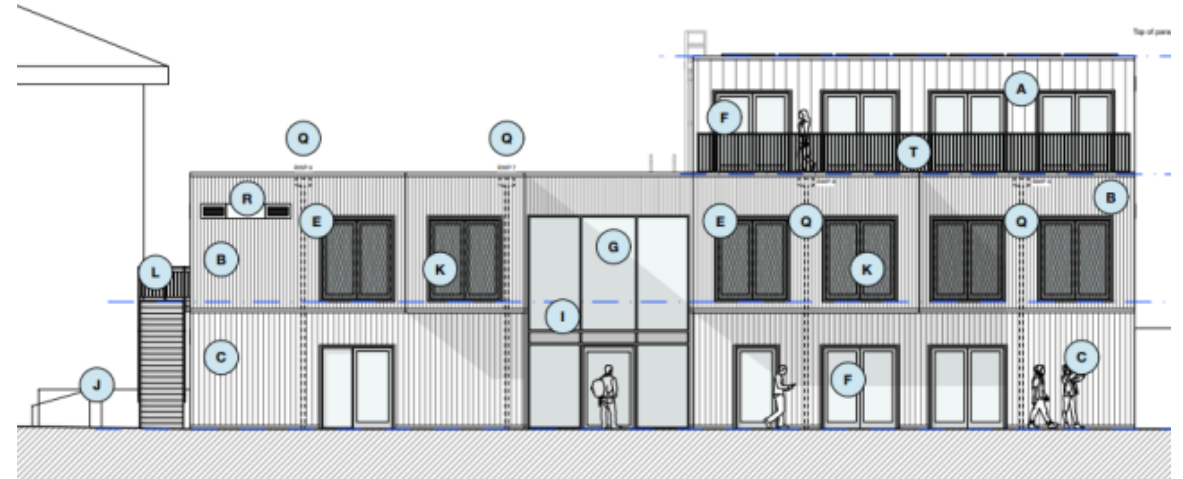


As proposed

East elevation



As approved

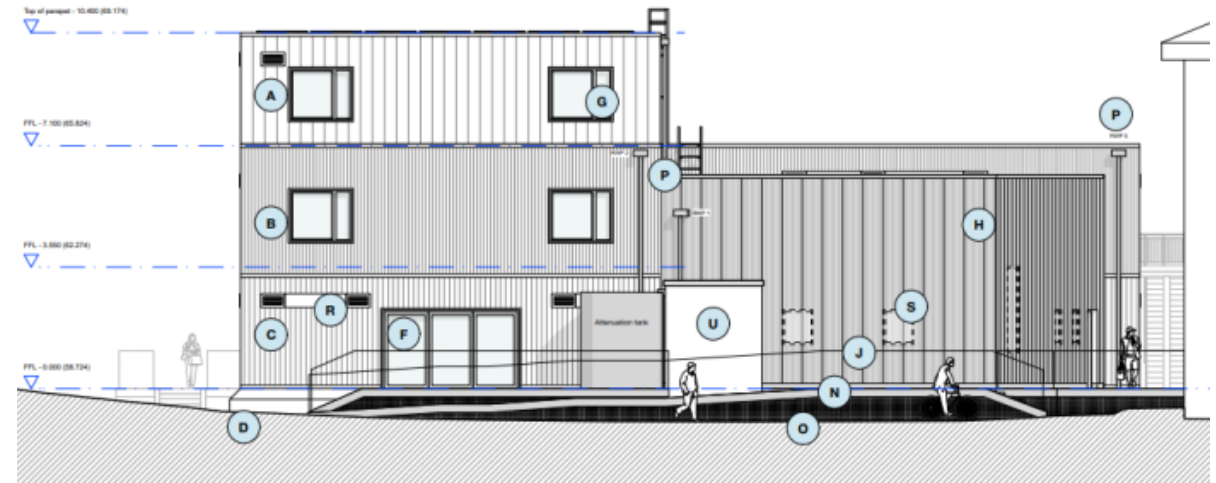


As proposed

West elevation



As approved

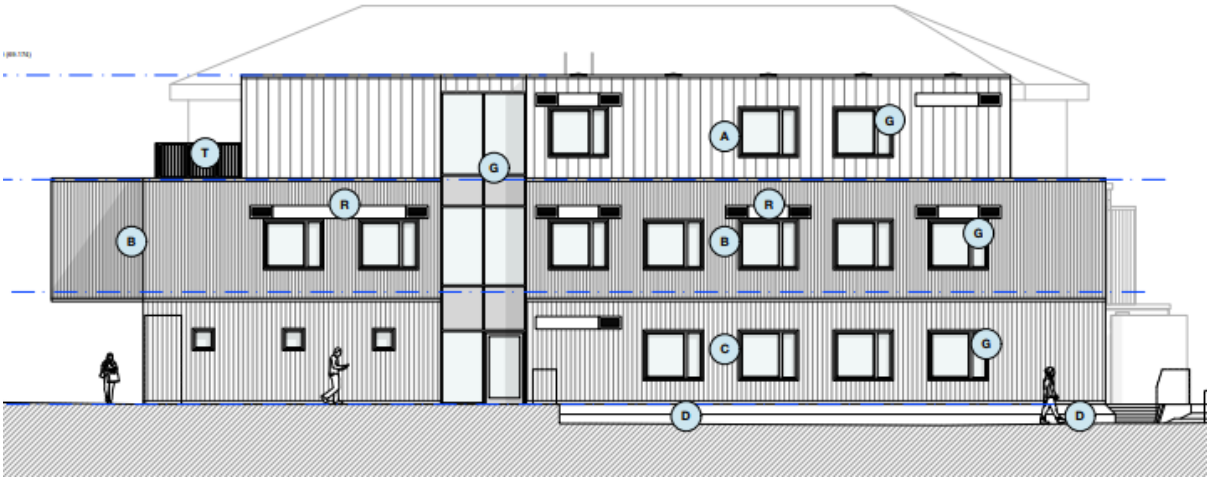


As proposed

North elevation

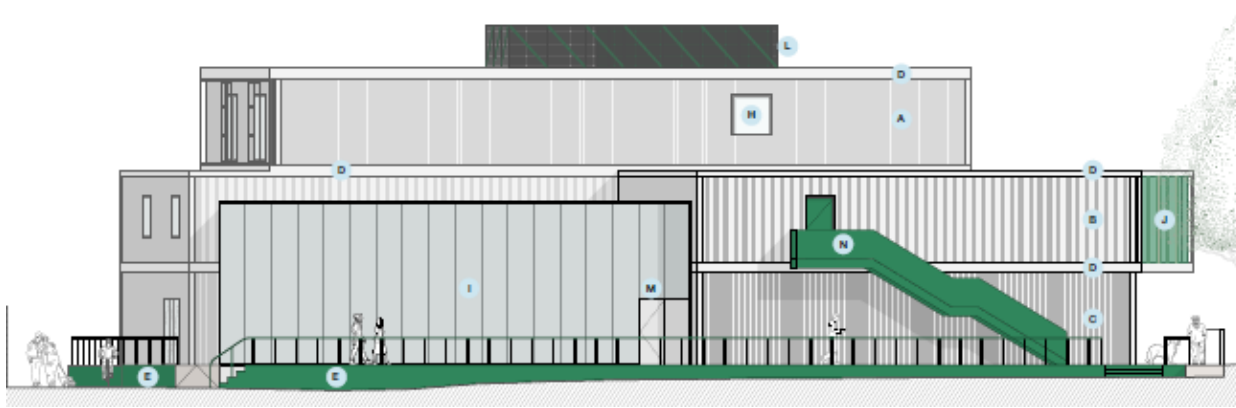


As approved

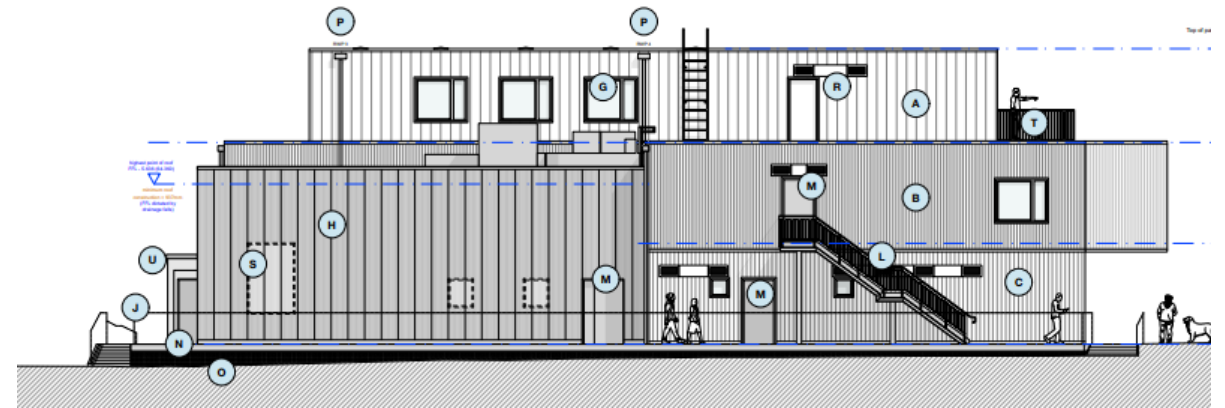


As proposed

South elevation



As approved

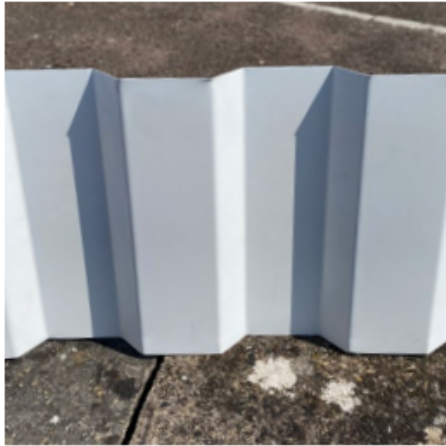


As proposed

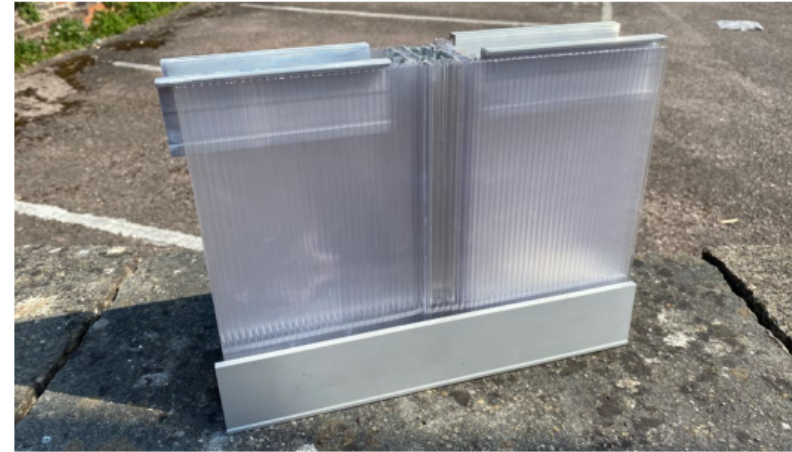
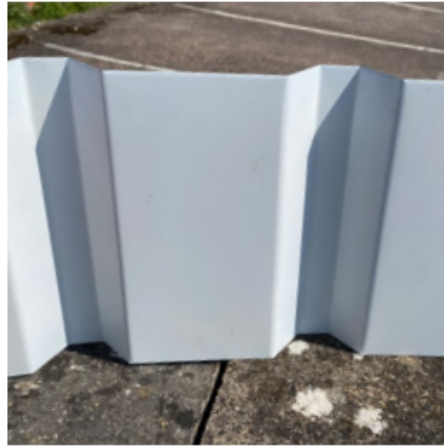
External precedents



External finishes



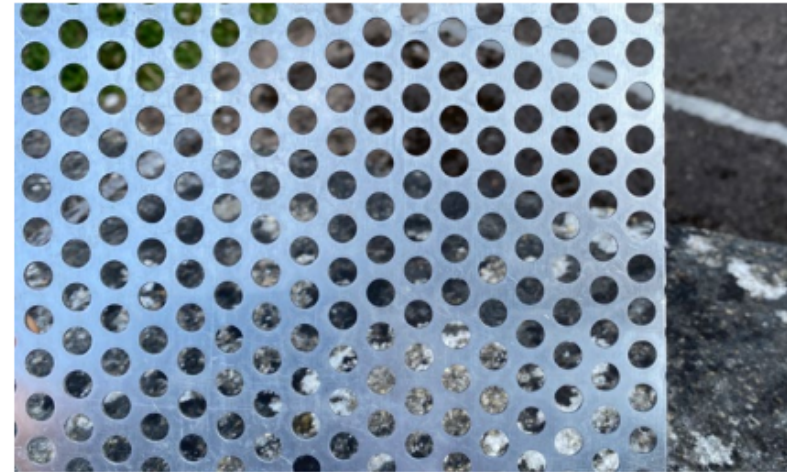
Aluminium profile cladding (main building)



Polycarbonate cladding (event space)



Rope diamond ferruled mesh cladding (stretched across first floor doors)



Perforated aluminium sheet cladding (balustrading around raised walkway)

Key Planning Matters

- Design
- Heritage impacts
- Amenity

Summary of Recommendation

The officer recommendation is to grant planning permission subject to a schedule of conditions which reflects those conditions imposed on the previous permission, but amended where necessary.

